



# Ordinance #240327

## Arterial Impact Fee

**Nicolas Bosonetto, PE – City Engineer PW**

**Aaron Schmidt – Hunt Midwest**



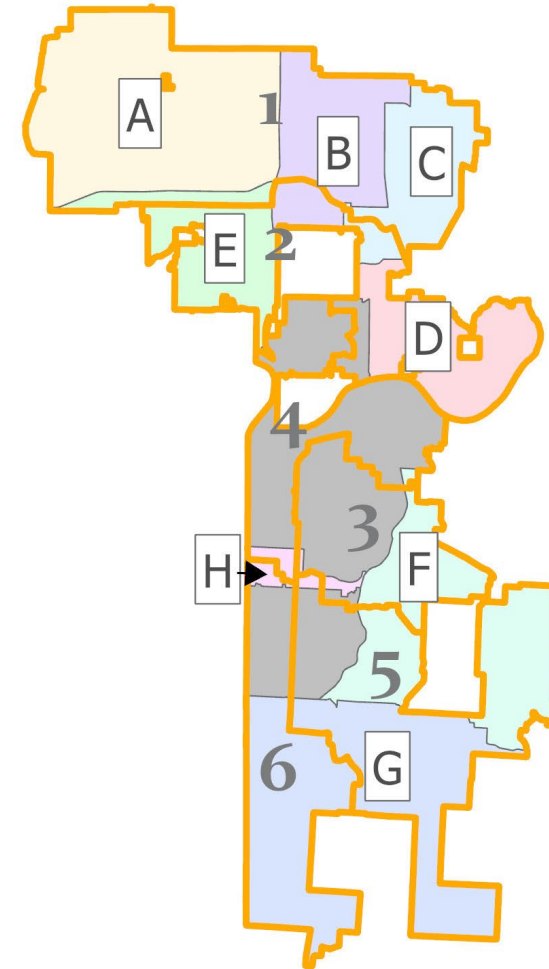
**KANSAS CITY**  
**Public Works**



# Arterial Impact Fees



- Impact Fee Advisory Committee
  - Met on February 5<sup>th</sup>, 2024
  - District A - \$1.9M balance
  - Attended by developers, councilmembers, PW, CPD, Economic Development:
    - Gary Hayes, MD Management
    - Aaron Schmidt, Hunt Midwest
    - Aaron Young, Hunt Midwest
    - Nathan Willett, District 1 Council
    - Terry Thomas, LDD
    - Todd LaTorella, PW
    - Noah Chapin, CPD
    - James Wang, Parks
    - Gerald Williams, CPD
    - Jenny Johnston, Northland Chamber
    - Andrew, Windfield Real Estate



# KCI 29 LOGISTICS PARK

3,300-ACRE MASTER PLANNED MEGA SITE | KANSAS CITY, MISSOURI

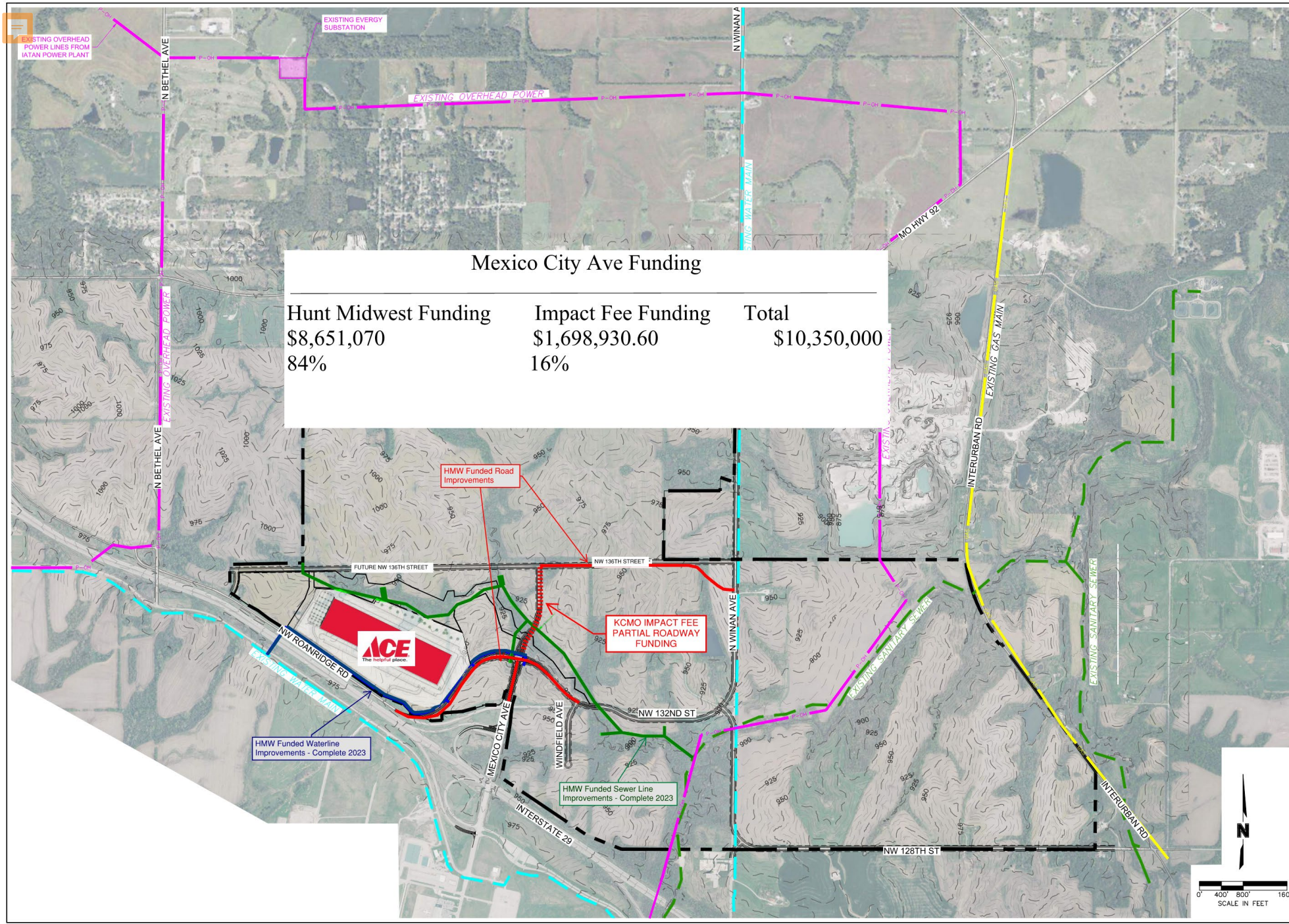
## KEY FEATURES:

- 20M+ SF class A industrial space
- Centrally located in logistics epicenter of U.S.
- Excellent access to I-29, I-435, I-70, and I-35
- Last stop for FedEx, UPS, and USPS
- Access to mega site and KCI Air Cargo via full Mexico City Avenue Interchange
- Fully entitled for manufacturing, **distribution, e-commerce, office,** technology, and similar industries
- On-site utilities include:
  - 345kV & 161kV power
  - Transmission water line
  - Wastewater treatment plant
- Lease, build-to-suit, and land-sale options



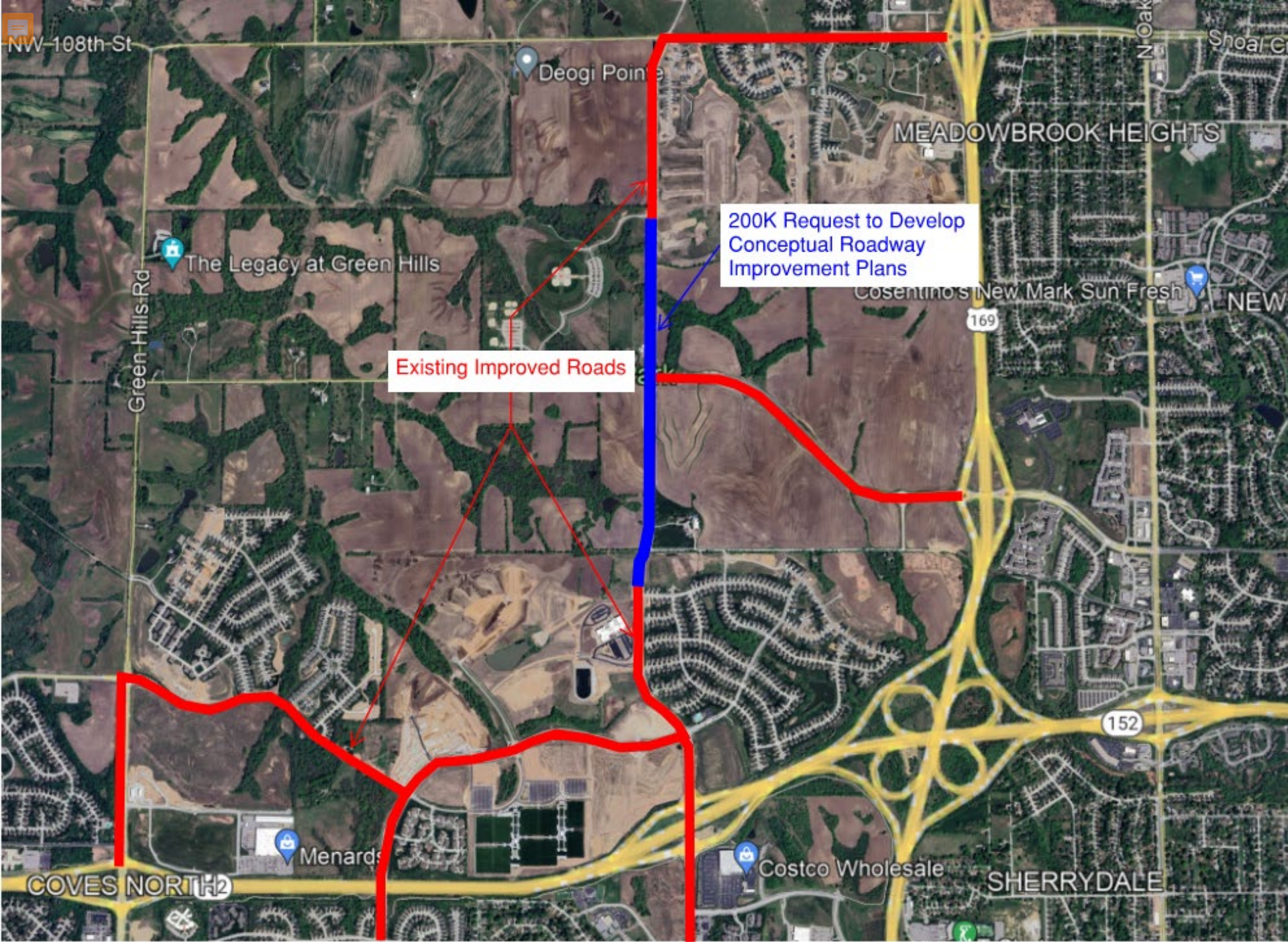
North  
Mexico  
City Ave





\$1.7M  
North  
Mexico  
City Ave





\$200k  
Platte  
Purchase  
Drive